



Buckthorn Grange Apartments, Ewell

The **PERSONAL** Agent

£310,950

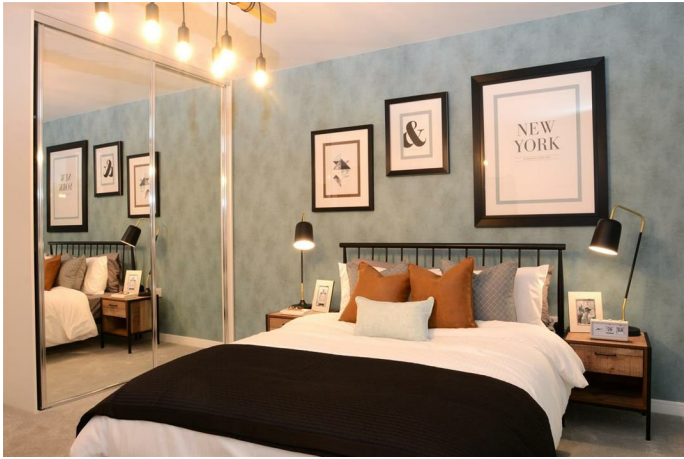
Leasehold

- 20% Help To Buy Available
- Stunning Apartments
- One and Two Bedrooms Apartments Available
- Walking Distance To Ewell Village
- Stunning Specification
- Call To Reserve Now



The Personal Agent are delighted to welcome to the market this stunning development of new homes in Ewell. This phase is a release of high end and spacious 1 and 2 bedrooms apartments with 20% help to buy available to first time buyers. A range of local amenities – including shops, sports facilities and open space – will be attractive to families, while professionals working in London will appreciate the convenient 35-minute commute into Waterloo station.

The Personal Agent are delighted to welcome to the market this stunning development of new homes in Ewell. This phase is a release of high end and spacious 1 and 2 bedrooms apartments with 20% help to buy available to first time buyers. A range of local amenities – including shops, sports facilities and open space – will be attractive to families, while professionals working in London will appreciate the convenient 35-minute commute into Waterloo station.



The
PERSONAL
Agent

BRITISH PROPERTY AWARDS 2022
GOLD WINNER
FOR ESTATE AGENT IN
EPSOM


JOHN DAVIES
HEAD JUDGE
BRITISH PROPERTY AWARDS



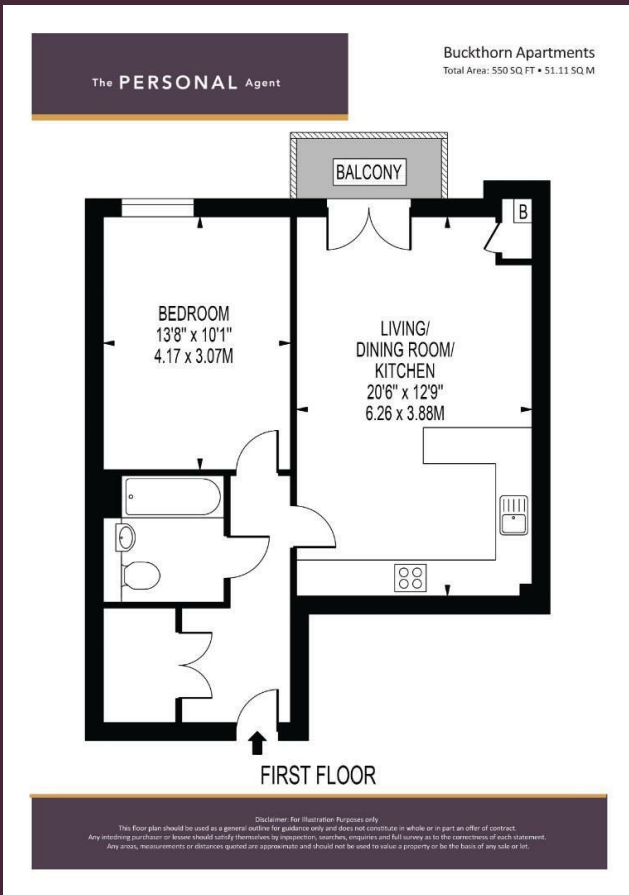

ROBERT MCLEAN
DIRECTOR
BRITISH PROPERTY AWARDS



**BRITISH
PROPERTY
AWARDS**

2022
★ ★ ★ ★ ★
GOLD WINNER

ESTATE AGENT
IN EPSOM



Energy Efficiency Rating		Current	Potential
Very energy efficient - lower running costs			
(92 plus) A			
(81-91) B			
(69-80) C			
(55-68) D			
(39-54) E			
(21-38) F			
(1-20) G			
Not energy efficient - higher running costs			
England & Wales		EU Directive 2002/91/EC	

EPSOM OFFICE
2 West Street
Epsom, Surrey, KT18 7RG
01372 745 850

STONELEIGH/EWELL OFFICE
62 Stoneleigh Broadway
Stoneleigh, Surrey, KT17 2HS
020 8393 9411

BANSTEAD OFFICE
141 High Street
Banstead, Surrey, SM7 2NS
01737 333699

LETTINGS & MANAGEMENT
163 High Street
Epsom, Surrey, KT19 8EW
01372 726 666



The Personal Agent Ltd. Registered office: 2A Boston Rd, Henley-on-Thames RG9 1DY.
Registered in England No. 4398817.



Please Note: Whilst every attempt has been made to ensure the accuracy of the floorplans contained here, measurements of doors, windows and room areas are approximate and no responsibility is taken for any error, omission or mis-statement. These plans are for representation purposes only and should be used as such by and prospective purchaser. The services, systems and appliances listed in the specification have not been tested by The Personal Agent and no guarantee as to their operating ability or their efficiency can be given. All images and text used to advertise our properties are for the sole use of The Personal Agent Ltd.

